

## ORIGINAL ARTICLE

## Recovery of amplitude integrated electroencephalographic background patterns within 24 hours of perinatal asphyxia

L G M van Rooij, M C Toet, D Osredkar, A C van Huffelen, F Groenendaal, L S de Vries

*Arch Dis Child Fetal Neonatal Ed* 2005;90:F245–F251. doi: 10.1136/adc.2004.064964

See end of article for authors' affiliations

Correspondence to:  
Dr de Vries, Department of Neonatology, Wilhelmina Children's Hospital, KE 04, 123.1, PO Box 85090, 3508 AB Utrecht, the Netherlands; l.devries@wkz.azu.nl

Accepted  
2 December 2004

**Objective:** To assess the time course of recovery of severely abnormal initial amplitude integrated electroencephalographic (aEEG) patterns (flat trace (FT), continuous low voltage (CLV), or burst suppression (BS)) in full term asphyxiated neonates, in relation to other neurophysiological and neuroimaging findings and neurodevelopmental outcome.

**Methods:** A total of 190 aEEGs of full term infants were reviewed. The neonates were admitted within 6 hours of birth to the neonatal intensive care unit because of perinatal asphyxia, and aEEG recording was started immediately. In all, 160 infants were included; 65 of these had an initial FT or CLV pattern and 25 an initial BS pattern. Neurodevelopmental outcome was assessed using a full neurological examination and the Griffiths' mental developmental scale.

**Results:** In the FT/CLV group, the background pattern recovered to continuous normal voltage within 24 hours in six of the 65 infants (9%). All six infants survived the neonatal period; one had a severe disability, and five were normal at follow up. In the BS group, the background pattern improved to normal voltage in 12 of the 25 infants (48%) within 24 hours. Of these infants, one died, five survived with moderate to severe disability, two with mild disability, and four were normal. The patients who did not recover within 24 hours either died in the neonatal period or survived with a severe disability.

**Conclusion:** In this study there was a small group of infants who presented with a severely abnormal aEEG background pattern within six hours of birth, but who achieved recovery to a continuous normal background pattern within the first 24 hours. Sixty one percent of these infants survived without, or with a mild, disability.

During recent years the clinical use of amplitude integrated electroencephalography (aEEG) in the neonatal intensive care unit has increased. The aEEG background pattern correlates well with the standard EEG, and the method has been noted to have very good predictive value for neurodevelopmental outcome in term neonates after perinatal asphyxia, especially in the first hours after birth.<sup>1–7</sup> This early assessment has been used for selection of infants who might benefit from neuroprotective therapy.<sup>8,9</sup> It is also used for informing the parents about the likely prognosis and provides additional information for use in the decision to continue or withdraw intensive care in a severely asphyxiated infant. It is known that the background pattern can change during the first 24–48 hours after birth, especially in infants with a burst suppression pattern.<sup>5,10,11</sup> Spontaneous recovery in aEEG background patterns after perinatal asphyxia has not yet been described in detail.

The aim of this study was to assess the recovery of aEEG patterns in full term asphyxiated neonates who present with a severely abnormal initial aEEG (flat trace (FT), continuous low voltage (CLV), or a burst suppression (BS) pattern). We hypothesised that children in whom an abnormal background pattern rapidly recovered would have a chance of a normal neurodevelopmental outcome.

## METHODS

Between 1992 and 2002, all full term neonates with perinatal asphyxia, who were admitted to the neonatal intensive care unit at Wilhelmina Children's Hospital (a tertiary referral centre) had an aEEG recorded for at least 24 hours (range 24 hours to 7 days). Asphyxia was diagnosed if they met at least three of the following criteria:

- signs of intrauterine asphyxia, as indicated by late decelerations on fetal monitoring or meconium stained liquor

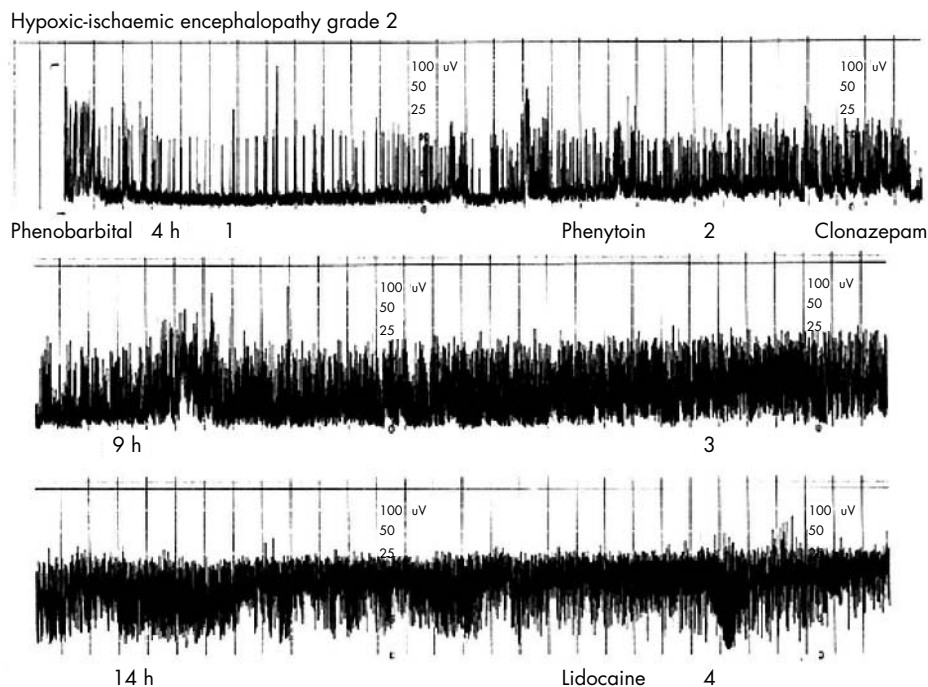
- arterial cord blood pH <7.10
- delayed onset of spontaneous respiration
- Apgar score of ≤5 at five minutes
- multiorgan failure.

For aEEG recording, the CFM 4640 (Lectromed, Letchworth, Hertfordshire, UK) was used. The CFM records a single channel EEG from bilateral parietal electrodes. The filtered signal is rectified, smoothed, and amplitude integrated before it is printed out at slow speed (6 cm/h) at the cot side.<sup>4,5</sup> For pattern recognition, we used the following criteria<sup>4,5,12</sup>:

- FT: very low voltage, mainly inactive (isoelectric) tracing with activity below 5 µV;
- CLV: continuous background pattern of very low voltage (around or below 5 µV);
- BS: discontinuous background pattern periods of very low voltage (inactivity) intermixed with bursts of higher amplitude;
- discontinuous normal voltage (DNV): discontinuous trace, where the voltage is predominantly above 5 µV;
- continuous normal voltage (CNV): continuous activity with voltage 10–25 (–50) µV (fig 1).

We retrospectively reviewed the medical records of 190 infants in whom the aEEG recording was started within the first 6 hours of birth. Infants with congenital malformations or chromosomal abnormalities were excluded, and one patient had to be excluded because he was lost to follow

**Abbreviations:** aEEG, amplitude integrated electroencephalography; BS, burst suppression; CLV, continuous low voltage; CNV, continuous normal voltage; DNV, discontinuous normal voltage; FT, flat trace; MRI, magnetic resonance imaging



**Figure 1** Example of an amplitude integrated electroencephalographic pattern, which shows recovery within 24 hours. The different background patterns are: 1, flat trace; 2, burst suppression; 3, discontinuous normal voltage; 4, continuous normal voltage.

up. Thus 160 full term asphyxiated infants were eligible for this study. The aEEG tracings were reviewed by two clinicians who were blinded to the outcome. The tracings were analysed for the background pattern during the first 6 hours after birth. If a depressed background pattern (BS/CLV/FT) was present, we followed the recovery. First we noted the time of recovery to a DNV pattern, as this pattern tends to be associated with a normal neurodevelopmental outcome.<sup>5</sup> We subsequently noted the time of recovery to a CNV pattern. Administration of anti-epileptic drugs was also noted. Seventy neonates had a normal aEEG (CNV/DNV) pattern at the onset (fig 2). For this study, we focused on a group of 65 neonates who had an initial FT or CLV pattern, and 25 neonates with an initial BS pattern within 6 hours of birth. The mean gestational age of the FT/CLV group was 40 weeks (range 37–42) and mean birth weight 3440 g (range 2170–4885). In the BS group, the mean gestational age was also 40 weeks (range 37–42), and the mean birth weight 3480 (range 2580–5140). All had a moderate to severe encephalopathy, grade 2 and 3 according to Sarnat and Sarnat.<sup>13</sup> None of the patients were involved in an early intervention study.

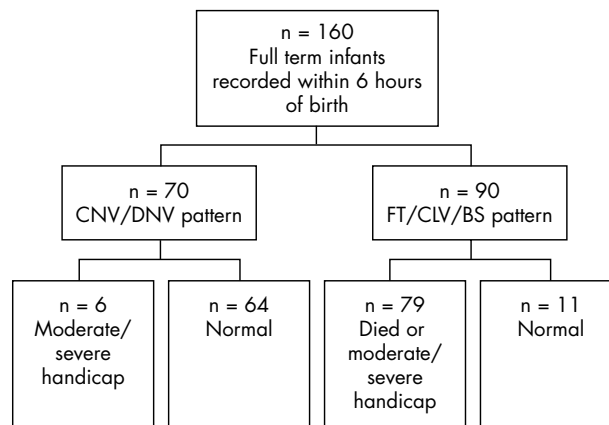
All survivors were seen in our outpatient clinic. Neurodevelopmental outcome was assessed using the Griffiths mental developmental scale at postnatal ages of at least 24 months.<sup>14</sup> The maximum age at follow up was 10 years. Neuromotor assessment was performed by a paediatric physiotherapist, who was blinded to the aEEG and other neonatal data.

Cerebral palsy was classified according to the criteria of Hagberg *et al.*<sup>15</sup> Adverse outcome was defined as death in the neonatal period, cerebral palsy, or a developmental quotient <85 on the Griffiths scale at 2 years of age. Maximal locomotor function of those with cerebral palsy was graded according to a simplified version of the classification suggested by Palisano *et al.*<sup>16</sup> At 2 years, a distinction was made between: (a) walking independently without restrictions—can take more than 10 steps without any help; (b) sits independently—infant maintains floor sitting and may pull

to stand and take steps holding on to furniture; (c) cannot sit—is unable to maintain anti-gravity head and trunk control in prone and sitting positions.

Most of the infants had a magnetic resonance imaging (MRI) scan during the first 2 weeks of birth (median age 9 days, range 5–15; up until 1999 only conventional images; since 1999 diffusion weighted images also). Abnormal findings in cortex, basal ganglia, thalamus, white matter, and posterior limb of the internal capsule seen after a hypoxic-ischaemic insult were assessed.<sup>17–19</sup>

A statistical analysis was performed using SPSS for windows version 11.5. For group comparison, the Mann-Whitney U test was used for continuous variables and Fisher exact or  $\chi^2$  tests for categorical variables. Sensitivity, specificity, and positive and negative predictive values of the test were calculated.  $p < 0.05$  was regarded as significant.



**Figure 2** Flow diagram of 160 study patients. BS, Burst suppression; CLV, continuous low voltage; CNV, continuous normal voltage; DNV, discontinuous normal voltage; FT, flat trace.

**Table 1** Predictive values of burst suppression together with flat trace/continuous low voltage for poor outcome in studies carried out within 6 hours of birth

Study	Sensitivity	Specificity	PPV	NPV
Hellström-Westas <i>et al</i> <sup>4</sup> (n=47)	95%	89%	86%	96%
Toet <i>et al</i> <sup>5</sup> (n=68)	91%	86%	86%	91%
Present study (n=160)	93%	85%	88%	91%

PPV, Positive predictive value; NPV, negative predictive value.

**RESULTS**

Figure 2 shows a flow diagram of the 160 study patients. Of the 70 patients with an initial normal or slightly abnormal (CNV/DNV) pattern within the first 6 hours of birth, all survived. Six had a moderate or severe handicap, and 64 were normal at follow up. In the group of 90 infants with an abnormal background pattern, only 11 had a normal outcome ( $p < 0.001$ ,  $\chi^2$  test).

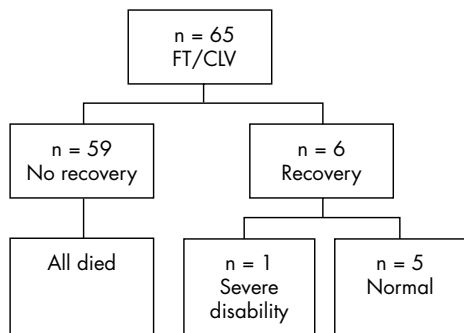
We calculated the sensitivity, specificity, and positive and negative predictive values for FT/CLV together with BS at the age of 6 hours for a poor neurodevelopmental outcome. Table 1 shows the results, together with comparative results of previous studies, also calculated 6 hours after birth. Thirty eight patients in the study of Toet *et al*<sup>5</sup> were also included in this study.

The positive predictive value for a normal outcome was 91% for the infants with a CNV pattern within 6 hours of birth, compared with 61% in infants who showed recovery to a CNV pattern within the first 24 hours of birth.

**FT/CLV group**

A total of 65 infants had a FT or CLV background pattern when aEEG was started within the first 6 hours of birth. In six (9%), the pattern improved to CNV within 24 hours (fig 3).

Table 2 shows the problems during delivery, Apgar scores, and aEEG data. All received one or more anti-epileptic drugs during the first 24 hours. All received phenobarbital as the first drug. In three infants (2, 5, and 6), phenobarbital was given as prophylaxis after birth asphyxia, but all these infants developed seizures later on. The infants with a normal outcome received one or two anti-epileptic drugs, in contrast with the infant with a poor outcome, who received four different anti-epileptic drugs. The 59 infants without recovery during the first 24 hours, all died during the first week of life from severe hypoxic-ischaemic encephalopathy, assessed in more detail using standard EEG, evoked potentials, ultrasonography, and MRI. In 22 infants (38%), postmortem examination was also performed, and the presence of extensive hypoxic-severe ischaemic damage was seen in all.



**Figure 3** Flow diagram of patients who had a flat trace (FT) or continuous low voltage (CLV) background pattern within the first 6 hours of birth.

**Neurodevelopmental outcome**

Of the six survivors, one infant showed severe learning disabilities, quadriplegia, and epilepsy at follow up. Five infants showed a normal neurodevelopmental outcome at a minimum age of 2 years. Of these infants, two were seen back in our outpatient clinic after these 2 years, one at 5 and one at 6 years of age. Both showed normal development.

Table 3 shows the results of the other diagnostic techniques used in these infants. In the infant who survived with a severe disability, the ultrasound and the MRI showed severe abnormalities in the central grey nuclei. In the infants who were normal at follow up, additional neurophysiology and neuroimaging techniques showed mild abnormalities.

**BS group**

A total of 25 infants had an initial BS background pattern. In this group, the pattern improved to CNV in 10 (40%) of the infants within 24 hours and in two within 48 hours, but the latter two had shown recovery to a DNV pattern within 24 hours (fig 4).

Similar to the other group, all infants received at least one anti-epileptic drug during the first 24 hours, and in three infants (1, 8, and 9) phenobarbital was given as prophylaxis. In this group, the difference in the number of anti-epileptic drugs used in relation to outcome was not so clear. Most of the infants with an unfavourable outcome received three or more anti-epileptic drugs. Table 4 shows delivery and aEEG data of this group.

In one infant, the background pattern initially recovered to CNV at 21 hours after birth, but 38 hours after birth an acute deterioration in the clinical condition was seen. The aEEG deteriorated to a BS pattern, and the infant subsequently died.

**Neurodevelopmental outcome**

Of the 11 survivors, four showed a normal development: one at the age of 2, two at the age of 3, and one at the age of 5 years. Two infants had a mild disability; both had a normal developmental quotient at 3 years but they had problems with language and speech development. Five infants had a severe handicap: one had ataxic cerebral palsy and epilepsy with a developmental quotient of 85 at the age of 2 years, and the others had dyskinetic cerebral palsy at the age of 2 years. Of the 13 infants with a persistent BS pattern after 24 hours, 10 died, and three survived with a severe disability. They all showed further deterioration of the background pattern to CLV or FT, and six of them had persistent seizures despite extensive anti-epileptic medication.

Table 5 shows the results of the other examinations. The patient who died did not have an MRI because he was too ill to be transported to the MRI unit. In the infants with a handicap, ultrasound and MRI showed moderate to severe abnormalities. In the infants who were normal at follow up, there were also abnormalities, but most were mild.

**Comparison of infants with FT/CLV and those with a BS pattern**

In the FT group, five of the six (83%) infants with recovery had a normal outcome. In the BS group, six of the 12 (50%)

**Table 2** Amplitude integrated electroencephalography data and outcome of infants with recovery of flat trace/continuous low voltage pattern

Patient	Obstetric complications	Apgar score	Start CFM at	Sarnat score	Recovery at	Anti-epileptic drug	Outcome
1	Pre-eclampsia, fetal bradycardia	0/2/3	1 h	2	5 h DNV 20 h CNV	Phen*	Normal
2	Fetal tachycardia, meconium stained liquor, shoulder dystocia, ventouse extraction	1/3/?	4.5 h	2	6 h DNV 9 h CNV	Phen*, clon	Normal
3	Placental abruption, emergency caesarean section	1/2/2	5 h	2	10 h DNV 12 h CNV	Phen*, lido	Normal
4	Cord prolapse, fetal bradycardia, emergency caesarean section	1/5/6	1 h	2	5 h DNV 10 h CNV	Phen*	Normal
5	Uterine rupture, emergency caesarean section	1/1/?	6 h	2	13 h DNV 20 h CNV	Phen*, clon*	Normal
6	Fetal bradycardia, forceps delivery	1/4/4	4 h	3	7 h CNV	Phen*, clon, phenyt, lido	Quadriplegia, epilepsy, Palisano category c

CFM, Cerebral function monitoring; CNV, continuous normal voltage; DNV, discontinuous normal voltage; Phen, phenobarbital; clon, clonazepam; phenyt, phenytoin; lido, lidocaine.

\*Anti-epileptic drug received before recovery.

infants with recovery had a normal or slightly abnormal outcome ( $p = 0.600$ , Fisher's exact test).

The median time interval from birth to onset of DNV pattern in infants with a FT/CLV pattern was 6.5 hours, and in the BS group it was 9 hours ( $p = 0.637$ , Mann-Whitney U test). For the onset of the CNV pattern, the median time interval was 11 hours in the FT/CLV group and 11.5 hours in the BS group ( $p = 0.604$ , Mann-Whitney U test).

Looking at the infants with an initially poor background pattern, those who showed recovery had a better outcome than those who had a persistently abnormal background pattern ( $p < 0.001$ , Fisher's exact test). We also found this in the FT/CLV group and BS separately ( $p < 0.001$  and  $p < 0.002$  respectively, Fisher's exact test).

For infants with an abnormal aEEG within the first 6 hours of birth, lack of recovery within 24 hours, combined with abnormalities on a standard EEG, evoked potentials, ultrasonography, and MRI, predicted neonatal death or poor outcome in 59/65 infants in the FT/CLV group compared with 13/25 in the group with the BS background pattern ( $p < 0.001$ ,  $\chi^2$  test).

## DISCUSSION

In this study, we describe the recovery of an initially severely abnormal aEEG background pattern in 18 out of 90 full term infants with a diagnosis of perinatal asphyxia, in whom aEEG recording was started within 6 hours of birth. Early recovery of the background pattern was observed in only six out of 65 (9%) infants who presented with a FT/CLV

background pattern and in 12 of 25 (48%) infants with a BS background pattern. Eleven of these 18 (61%) infants with a rapid recovery of the background pattern had a normal or mildly abnormal outcome (nine had a normal outcome and two a mildly abnormal outcome). Five of these 11 infants had a FT/CLV background pattern. Although rapid recovery of the background pattern was more common in the BS group, this was less often associated with a normal outcome. This difference in outcome for these two background pattern groups is of interest. The insult around the time of delivery in the FT/CLV group was almost invariably acute and severe, but presumably of shorter duration than in those with a persistent FT/CLV background pattern and in those with a BS pattern. As six of the 12 infants in the BS group had an abnormal outcome in spite of rapid recovery, aEEG by itself was insufficient to accurately predict neurodevelopmental outcome. Other modalities such as ultrasonography, MRI, and evoked potentials were required to provide a more accurate prediction. In the infants who survived and developed dyskinetic cerebral palsy, abnormalities of the basal ganglia and thalami were seen on MRI, suggestive of acute near total asphyxia as the underlying disorder.<sup>17–20–23</sup> MRI is, however, not a bedside technique, and abnormalities of the basal ganglia are not always visible during the first few days after birth, even with the use of diffusion weighted imaging.<sup>22–24–25</sup> Evoked potentials showed delayed or absent responses in most of the infants who survived with moderate to severe disabilities. This is in agreement with previous studies, showing that evoked potentials are highly

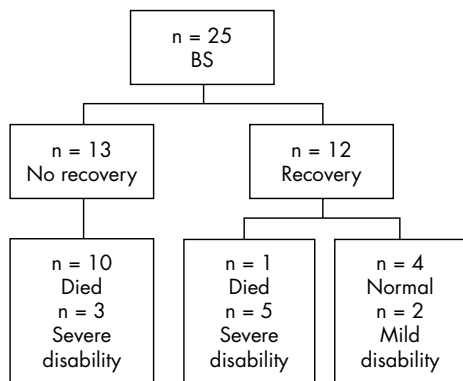
**Table 3** Results of other examinations in the group with flat trace/continuous low voltage patterns

Patient	Ultrasound	VEP	SEP	MRI findings	Outcome
1	Normal	**	**	Normal	Normal
2	Posterior fossa haemorrhage	Normal*	Normal*	Normal	Normal
3	THAL	Normal*	Normal*	Mild SI changes in basal ganglia, normal PLIC	Normal
4	Minimal THAL	Normal	Normal	Mild SI changes in thalami right side, normal PLIC	Normal
5	Normal	Normal	Normal	Normal	Normal
6	PVE + THAL	Normal	Normal	Severe SI changes in basal ganglia and thalami	Quadriplegia, epilepsy, Palisano category c

VEP, visual evoked potential; SEP, sensory evoked potential; MRI, magnetic resonance imaging; PVE, periventricular echodensities; THAL, thalamic echodensities; SI, signal intensity; PLIC, posterior limb internal capsule

\*First delayed, but quick recovery.

\*\*VEP, SEP, or MRI not performed.



**Figure 4** Flow diagram of patients who had a burst suppression (BS) background pattern within the first 6 hours of birth.

predictive.<sup>10 26 27</sup> In two infants, the evoked potentials were normal, but MRI showed abnormalities. This would suggest that the lesions seen on MRI were of antenatal origin.

Although data on an initially inactive or severely abnormal EEG and a normal outcome do exist, they are scarce. Pezzani *et al*<sup>28</sup> showed that recovery of an inactive EEG within the first 10 hours of birth does occur and can be associated with a normal outcome. Selton and Andre<sup>29</sup> reported on one infant with an initially severely abnormal EEG 9 hours after birth, who recovered within 24 hours and had a normal outcome. Pressler *et al*<sup>30</sup> reported on two infants with an inactive EEG during the first 8 hours after birth, who showed recovery within 12 hours of birth, and both infants had a normal outcome. Our data are in agreement with these studies and stress the importance of continuous monitoring beyond the first 12 hours of birth to assess whether rapid recovery

occurs, even though this is not a common finding when a FT/CLV background pattern is seen.

We previously reported that the presence of a poor background pattern at 6 hours of age had a positive predictive value of 84% and negative predictive value of 91% for later neurodevelopmental outcome.<sup>5</sup> In this larger group of infants, these data still hold true, with a positive predictive value of 88% and a negative predictive value of 91%. Another study, considering much smaller groups of patients, reported similar predictive values. Hellström-Westas *et al*<sup>3</sup> studied 47 term asphyxiated infants who had aEEG monitoring started before 6 hours of life. BS, CLV, and FT were regarded as abnormal background patterns and predictive of poor outcome. They found a positive predictive value of 86% and negative predictive value of 96%.

All our infants received at least one, but more often at least two, anti-epileptic drugs during the first 24 hours. Phenobarbital was given as the first choice drug in all infants. In spite of administration of anti-epileptic medication, recovery of the aEEG pattern was noted. It has been reported that anti-epileptic drugs can lead to transient deterioration of the aEEG background pattern, and that this deterioration also depends on the severity of the preceding insult to the brain.<sup>4 5 31-33</sup> The fast recovery seen in this study therefore implies that the brain injury of some of our infants was not as severe as suggested by their initial aEEG findings. The infants in the FT/CLV group, with a normal outcome, received one or two anti-epileptic drugs, and those with a poor outcome received four different drugs. In the BS group, this difference was not so clear. It is known that seizures (clinical and electrographic) are often associated with an abnormal outcome, especially when combined with an abnormal background pattern.<sup>23 34 35</sup>

The aEEG in full term infants, during the first hours after perinatal asphyxia, can predict neurodevelopmental outcome,

**Table 4** Amplitude integrated electroencephalography data and outcome of infants with recovery of burst suppression pattern

Patient	Obstetric complications	Apgar score	Start CFM at	Sarnat score	Recovery at	Anti-epileptic drug	Outcome
1	Fetal decelerations, ventouse extraction	1/2/5	4 h	2	10 h DNV 20 h CNV	Phen*, clon*	Normal
2	Short period of bradycardia	2/5/?	3 h	2	9 h CNV	Phen*	Normal
3	Premature rupture of membranes, fetal decelerations, emergency caesarean section	1/5/5	2.5 h	2	19 h DNV 32 h CNV	Phen*, phenyt*, mida	Normal
4	Post-term pregnancy, cord prolapse	1/?/?	3 h	2	4.5 h DNV 10 h DNV	Phen*, clon*	Normal
5	Uterine rupture, emergency caesarean section	2/4/5	3 h	2	47 h CNV	Phen*, mida*, lido	Delayed language and speech development
6	Shoulder dystocia	0/2/1	3 h	2	6 h DNV 10 h CNV	Phen*, phenyt*	Delayed language and speech development
7	Delayed vaginal delivery, no other complications	6/6/9	6 h	2	9 h DNV 20 h CNV	Phen*, clon*, phenyt,	Ataxic cerebral palsy,
8	Cord prolapse, emergency caesarean section Dyskinetic cerebral palsy, Palisano category a	0/?/?	3 h	2	6 h DNV 11 h CNV	Phen*, phenyt, clon	epilepsy, Palisano category a
9	Fetal decelerations	1/1/?	4 h	2	8 h DNV 12 h CNV	Phen*, clon	Dyskinetic cerebral palsy, Palisano category b
10	Placental abruption, ventouse extraction	1/5/7	2.5 h	2	4 h DNV 5 h CNV	Phen*, lido, mida	Dyskinetic cerebral palsy, Palisano category c
11	Meconium stained liquor, fetal bradycardia, emergency caesarean section	1/4/?	2 h	2	9 h DNV 11 h CNV	Phen*, lido, mida, clon	Dyskinetic cerebral palsy, Palisano category c
12	Home delivery, fetal bradycardia	2/?/?	3 h	3	11 h DNV 21 h CNV after 38 h deterioration	Phen*, lido	Died

CFM, Cerebral function monitoring; CNV, continuous normal voltage; DNV, discontinuous normal voltage; Phen, phenobarbital; clon, clonazepam; phenyt, phenytoin; lido, lidocaine; mida, midazolam.

\*Anti-epileptic drug received before recovery.

**Table 5** Results of other examinations in the burst suppression group

Patient	Ultrasound	VEP	SEP	MRI findings	Outcome
1	Normal	Normal*	Normal*	Normal	Normal
2	Minimal THAL	Normal	Normal	**	Normal
3	Minimal THAL	Delayed	Delayed	Mild SI changes in thalami, normal PLIC	Normal
4	Minimal THAL	Normal*	Normal	**	Normal
5	THAL	Delayed	Delayed	Mild SI changes in basal ganglia + central gyrus, normal PLIC	Delayed language and speech development
6	THAL	Normal	Normal	Posterior fossa haemorrhage	Delayed language and speech development
7	THAL	Normal	Normal	Mild SI changes in basal ganglia	Ataxic cerebral palsy, epilepsy, Palisano category a
8	THAL	Absent	Absent	Mild SI changes in basal ganglia	Dyskinetic cerebral palsy Palisano category a
9	Normal	Delayed	Delayed	Severe SI changes in basal ganglia, abnormal PLIC	Dyskinetic cerebral palsy, Palisano category b
10	THAL	**	**	Moderate SI changes in basal ganglia, normal PLIC	Dyskinetic cerebral palsy, Palisano category c
11	THAL	Delayed	Delayed	Severe SI changes in basal ganglia + central gyrus, abnormal PLIC	Dyskinetic cerebral palsy, Palisano category c
12	SUBC+THAL	Normal	Absent	**	Died

VEP, Visual evoked potential; SEP, sensory evoked potential; MRI, magnetic resonance imaging; PVE, periventricular echodensities; THAL, thalamic echodensities; SUBC, subcortical echodensities; SI, signal intensity; PLIC, posterior limb internal capsule.

\*First delayed, but quick recovery.

\*\*VEP, SEP, or MRI not performed.

making it a very useful technique for early selection of infants for neuroprotective treatments. We have shown that there is a small group of infants who have a severely abnormal background pattern during the first 6 hours after birth, but recover to a normal background pattern within 24 hours. Almost half of the infants with a rapid recovery survived without or with a mild disability. Assessment of outcome took place at 24 months of age. As recently reported by Barnett *et al*,<sup>36</sup> long term follow up of these children is of importance, as a normal score in the early years cannot preclude later neurological, perceptual-motor, or cognitive abnormalities.

Thus early recovery of an initially abnormal aEEG background pattern is of predictive value. However, in the case of a rapid recovery of an initially poor aEEG pattern, additional techniques are needed to make a further distinction between those with a good or a poor neurodevelopmental outcome. We would like to stress the importance of early monitoring, as there is a difference in predictive value of an initially normal background pattern compared with an initially abnormal pattern showing recovery within 24 hours of birth.

We recommend continuation of aEEG recording and intensive care treatment in the severely asphyxiated infant for at least 24 hours, as there is a chance of recovery with a good neurodevelopmental outcome. Long term follow up of these children is important.

## ACKNOWLEDGEMENTS

LvR was supported by the Dutch Epilepsy Foundation. D O was supported by the Slovenian Ministry of Education, Science and Sport and a Huygens grant.

## Authors' affiliations

**L G M van Rooij, M C Toet, D Osredkar, F Groenendaal, L S de Vries**, Department of Neonatology, Wilhelmina Children's Hospital, University Medical Centre Utrecht, the Netherlands

**A C van Huffelen**, Department of Clinical Neurophysiology, Wilhelmina Children's Hospital

**D Osredkar**, Department of Pediatric Neurology, University Children's Hospital, Ljubljana, Slovenia

Competing interests: none declared

## REFERENCES

- 1 **al Naqeeb N**, Edwards AD, Cowan FM, *et al*. Assessment of neonatal encephalopathy by amplitude-integrated electroencephalography. *Pediatrics* 1999;**103**:1263-71.
- 2 **Eken P**, Toet MC, Groenendaal F, *et al*. Predictive value of early neuroimaging, pulsed Doppler and neurophysiology in full term infants with hypoxic-ischaemic encephalopathy. *Arch Dis Child Fetal Neonatal Ed* 1995;**73**:F75-80.
- 3 **Hellström-Westas L**. Comparison between tape-recorded and amplitude-integrated EEG monitoring in sick newborn infants. *Acta Paediatr* 1992;**81**:812-19.
- 4 **Hellström-Westas L**, Rosen I, Svenningsen NW. Predictive value of early continuous amplitude integrated EEG recordings on outcome after severe birth asphyxia in full term infants. *Arch Dis Child Fetal Neonatal Ed* 1995;**72**:F34-8.
- 5 **Toet MC**, Hellström-Westas L, Groenendaal F, *et al*. Amplitude integrated EEG 3 and 6 hours after birth in full term neonates with hypoxic-ischaemic encephalopathy. *Arch Dis Child Fetal Neonatal Ed* 1999;**81**:F19-23.
- 6 **Toet MC**, van der MW, de Vries LS, *et al*. Comparison between simultaneously recorded amplitude integrated electroencephalogram (cerebral function monitor) and standard electroencephalogram in neonates. *Pediatrics* 2002;**109**:772-9.
- 7 **Ter Horst HJ**, Sommer C, Bergman KA, *et al*. Prognostic significance of amplitude-integrated EEG during the first 72 hours after birth in severely asphyxiated neonates. *Pediatr Res* 2004;**55**:1026-33.
- 8 **Azzopardi D**, Robertson NJ, Cowan FM, *et al*. Pilot study of treatment with whole body hypothermia for neonatal encephalopathy. *Pediatrics* 2000;**106**:684-94.
- 9 **Thoresen M**, Whitelaw A. Cardiovascular changes during mild therapeutic hypothermia and rewarming in infants with hypoxic-ischemic encephalopathy. *Pediatrics* 2000;**106**:92-9.
- 10 **Groenendaal F**, de Vries LS. Selection of babies for intervention after birth asphyxia. *Semin Neonatal* 2000;**5**:17-32.
- 11 **Thornberg E**, Ekstrom-Jodal B. Cerebral function monitoring: a method of predicting outcome in term neonates after severe perinatal asphyxia. *Acta Paediatr* 1994;**83**:596-601.
- 12 **Thornberg E**, Thiringer K. Normal pattern of the cerebral function monitor trace in term and preterm neonates. *Acta Paediatr Scand* 1990;**79**:20-5.
- 13 **Sarnat HB**, Sarnat MS. Neonatal encephalopathy following fetal distress. A clinical and electroencephalographic study. *Arch Neurol* 1976;**33**:696-705.
- 14 **Griffiths R**. *The abilities of babies: a study in mental measurement*. Amersham: Association of Research in Infants and Child Development, 1976.
- 15 **Hagberg B**, Hagberg G, Olow I. The changing panorama of cerebral palsy in Sweden 1954-1970. I. Analysis of the general changes. *Acta Paediatr Scand* 1975;**64**:187-92.
- 16 **Palisano R**, Rosenbaum P, Walter S, *et al*. Development and reliability of a system to classify gross motor function in children with cerebral palsy. *Dev Med Child Neurol* 1997;**39**:214-23.
- 17 **Barkovich AJ**, Westmark K, Partridge C, *et al*. Perinatal asphyxia: MR findings in the first 10 days. *AJNR Am J Neuroradiol* 1995;**16**:427-38.
- 18 **Cowan F**. Outcome after intrapartum asphyxia in term infants. *Semin Neonatal* 2000;**5**:127-40.

19 **Rutherford MA**, Pennock JM, Schwieso JE, *et al*. Hypoxic ischaemic encephalopathy: early magnetic resonance imaging findings and their evolution. *Neuropediatrics* 1995;**26**:183–91.

20 **Barkovich AJ**, Hallam DK. Neuroimaging in perinatal hypoxic-ischemic injury. *MRDD Research Review* 1997;**3**:28–41.

21 **Rutherford M**, Pennock J, Schwieso J, *et al*. Hypoxic-ischaemic encephalopathy: early and late magnetic resonance imaging findings in relation to outcome. *Arch Dis Child Fetal Neonatal Ed* 1996;**75**:F145–51.

22 **Soul JS**, Robertson RL, Tzika AA, *et al*. Time course of changes in diffusion-weighted magnetic resonance imaging in a case of neonatal encephalopathy with defined onset and duration of hypoxic-ischemic insult. *Pediatrics* 2001;**108**:1211–14.

23 **Volpe JJ**. *Neurology of the newborn*, 4th ed. Philadelphia: WB Saunders, 2001.

24 **Robertson RL**, Ben Sira L, Barnes PD, *et al*. MR line-scan diffusion-weighted imaging of term neonates with perinatal brain ischemia. *AJNR Am J Neuroradiol* 1999;**20**:1658–70.

25 **Rutherford M**, Counsell S, Allsop J, *et al*. Diffusion-weighted magnetic resonance imaging in term perinatal brain injury: a comparison with site of lesion and time from birth. *Pediatrics* 2004;**114**:1004–14.

26 **de Vries LS**. Somatosensory-evoked potentials in term neonates with postasphyxial encephalopathy. *Clin Perinatol* 1993;**20**:463–82.

27 **Muttitt SC**, Taylor MJ, Kobayashi JS, *et al*. Serial visual evoked potentials and outcome in term birth asphyxia. *Pediatr Neurol* 1991;**7**:86–90.

28 **Pezzani C**, Radvanyi-Bouvet MF, Relier JP, *et al*. Neonatal electroencephalography during the first twenty-four hours of life in full-term newborn infants. *Neuropediatrics* 1986;**17**:11–18.

29 **Selton D**, Andre M. Prognosis of hypoxic-ischaemic encephalopathy in full-term newborns: value of neonatal electroencephalography. *Neuropediatrics* 1997;**28**:276–80.

30 **Pressler RM**, Boylan GB, Morton M, *et al*. Early serial EEG in hypoxic ischaemic encephalopathy. *Clin Neurophysiol* 2001;**112**:31–7.

31 **Bjerre I**, Hellstrom-Westas L, Rosen I, *et al*. Monitoring of cerebral function after severe asphyxia in infancy. *Arch Dis Child* 1983;**58**:997–1002.

32 **Leuven van K**, Groenendaal F, Toet M, *et al*. Midazolam and amplitude-integrated EEG in asphyxiated fullterm neonates. *Acta Paediatr* 2004;**93**:1221–7.

33 **Ter Horst HJ**, Brouwer OF, Bos AF. Burst suppression on amplitude-integrated electroencephalogram may be induced by midazolam: a report on three cases. *Acta Paediatr* 2004;**93**:559–63.

34 **Boylan GB**, Pressler RM, Rennie JM, *et al*. Outcome of electroclinical, electrographic, and clinical seizures in the newborn infant. *Dev Med Child Neurol* 1999;**41**:819–25.

35 **McBride MC**, Laroia N, Guillet R. Electrographic seizures in neonates correlate with poor neurodevelopmental outcome. *Neurology* 2000;**55**:506–13.

36 **Barnett AL**, Guzzetta A, Mercuri E, *et al*. Can the Griffiths scales predict neuromotor and perceptual-motor impairment in term infants with neonatal encephalopathy? *Arch Dis Child* 2004;**89**:637–43.

### Clinical Evidence—Call for contributors

*Clinical Evidence* is a regularly updated evidence-based journal available worldwide both as a paper version and on the internet. *Clinical Evidence* needs to recruit a number of new contributors. Contributors are healthcare professionals or epidemiologists with experience in evidence-based medicine and the ability to write in a concise and structured way.

#### Areas for which we are currently seeking authors:

- Child health: nocturnal enuresis
- Eye disorders: bacterial conjunctivitis
- Male health: prostate cancer (metastatic)
- Women’s health: pre-menstrual syndrome; pyelonephritis in non-pregnant women

However, we are always looking for others, so do not let this list discourage you.

#### Being a contributor involves:

- Selecting from a validated, screened search (performed by in-house Information Specialists) epidemiologically sound studies for inclusion.
- Documenting your decisions about which studies to include on an inclusion and exclusion form, which we keep on file.
- Writing the text to a highly structured template (about 1500–3000 words), using evidence from the final studies chosen, within 8–10 weeks of receiving the literature search.
- Working with *Clinical Evidence* editors to ensure that the final text meets epidemiological and style standards.
- Updating the text every six months using any new, sound evidence that becomes available. The *Clinical Evidence* in-house team will conduct the searches for contributors; your task is simply to filter out high quality studies and incorporate them in the existing text.
- To expand the topic to include a new question about once every 12–18 months.

If you would like to become a contributor for *Clinical Evidence* or require more information about what this involves please send your contact details and a copy of your CV, clearly stating the clinical area you are interested in, to Klara Brunnhuber ([kbrunnhuber@bmjgroup.com](mailto:kbrunnhuber@bmjgroup.com)).

### Call for peer reviewers

*Clinical Evidence* also needs to recruit a number of new peer reviewers specifically with an interest in the clinical areas stated above, and also others related to general practice. Peer reviewers are healthcare professionals or epidemiologists with experience in evidence-based medicine. As a peer reviewer you would be asked for your views on the clinical relevance, validity, and accessibility of specific topics within the journal, and their usefulness to the intended audience (international generalists and healthcare professionals, possibly with limited statistical knowledge). Topics are usually 1500–3000 words in length and we would ask you to review between 2–5 topics per year. The peer review process takes place throughout the year, and our turnaround time for each review is ideally 10–14 days.

If you are interested in becoming a peer reviewer for *Clinical Evidence*, please complete the peer review questionnaire at [www.clinicalevidence.com](http://www.clinicalevidence.com) or contact Klara Brunnhuber ([kbrunnhuber@bmjgroup.com](mailto:kbrunnhuber@bmjgroup.com)).



## Recovery of amplitude integrated electroencephalographic background patterns within 24 hours of perinatal asphyxia

L G M van Rooij, M C Toet, D Osredkar, et al.

*Arch Dis Child Fetal Neonatal Ed* 2005 90: F245-FF251  
doi: 10.1136/adc.2004.064964

---

Updated information and services can be found at:  
<http://fn.bmj.com/content/90/3/F245.full.html>

---

*These include:*

### References

This article cites 30 articles, 13 of which can be accessed free at:  
<http://fn.bmj.com/content/90/3/F245.full.html#ref-list-1>

Article cited in:  
<http://fn.bmj.com/content/90/3/F245.full.html#related-urls>

### Email alerting service

Receive free email alerts when new articles cite this article. Sign up in the box at the top right corner of the online article.

---

### Topic Collections

Articles on similar topics can be found in the following collections

[Injury](#) (111 articles)  
[Trauma](#) (115 articles)

---

### Notes

---

To request permissions go to:  
<http://group.bmj.com/group/rights-licensing/permissions>

To order reprints go to:  
<http://journals.bmj.com/cgi/reprintform>

To subscribe to BMJ go to:  
<http://group.bmj.com/subscribe/>